



# HAWKSNEST



Dimensions are approximate. Developer reserves the right to make changes without notice.

**The Vision** To create an exclusive, traditional community in harmony with nature's legacy, surrounded by open spaces for the enjoyment of every resident. A community designed with great respect for the land, for nature and for the past.



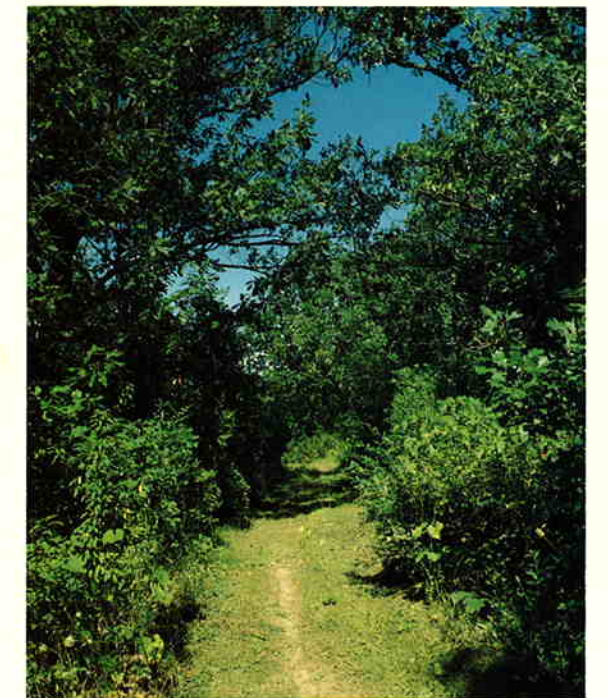
Directions: Exit I-94 west at SS, take Golf Road west to E, north on E, approximately 2 miles, to Hawksnest

**Location** Hawksnest is located in the Town of Delafield on the west side of Maple Avenue (Highway E) approximately one mile south of Hartland.

**Architectural Concept** Homes must be basically traditional in design to qualify for construction in Hawksnest.

**Improvements** The price of each lot includes sanitary sewer with lateral to the lot line, asphalt streets, underground gas, electric and telephone service.

**Open Spaces** Hawksnest "Open Space Areas" will be deeded to Hawksnest Homeowners' Association by the developer. The Homeowners Association will be responsible for the care and maintenance of these open space areas as well as the landscaped courts, entryways, and landscaping along Maple Avenue. Each lot owner will automatically be a member of the Association and be responsible for the payment of annual dues.



**The Ice Age Trail** A segment of the 1000 mile Ice Age Trail winds through the upland woods portion of Hawksnest open space. Private trails within Hawksnest will provide easy access to this public trail.